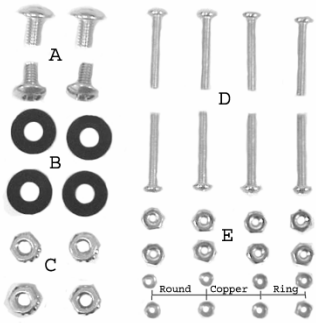


Cradle Side Table Assembly

NOTE: DO NOT fully tighten screws until AFTER fully assembled



Hardware

- A) 4 Short Screws
- B) 4 Black Washers
- C) 4 Large Nuts
- D) 8 Long Screws
- E) 8 Small Nuts

Other

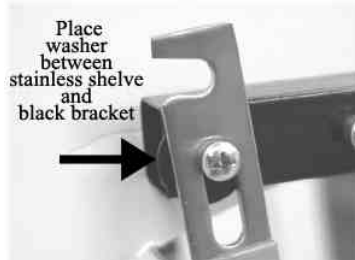
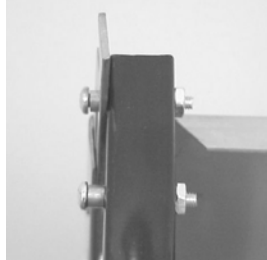
- (8) Copper Ring Spacers
- (4) Black Brackets



STEP 1 Place the first bracket on the cradle by unscrewing the four nuts located at the metal ring with the 4 legs of the cradle. Note that the top of the brackets will have to point outward to the sides.



STEP 2 Put each metal support bracket on the outside of the leg placing the upper hole of the bracket through the screw while replacing the nut in position. Don't tighten yet and don't place the bottom screw; adjustment may be required.



STEP 3 Place one (D) long screw from the outside of the bracket through the sliding hole of the shelf hinge. The screw must be placed in from the outer part of the bracket. Make sure that you insert the long screw into the copper ring spacer before inserting into shelf hinge. Repeat the same on the other bracket hole. Secure the screws with a nut and black washer (in between shelve and bracket) on the top screw and a nut on the bottom screw.

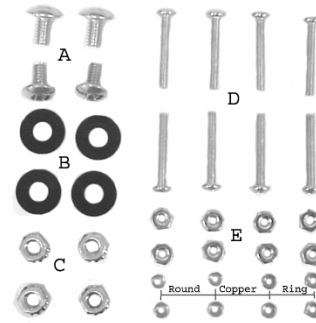


STEP 4 The last step is to secure the brackets with the large short screw and the nut accompanying it. Tighten securely and you are ready to go. If you have questions, please contact Primo customer service at 770.729.1110.



Cradle Side Table Assembly

NOTE: DO NOT fully tighten screws until AFTER fully assembled



Hardware

- A) 4 Short Screws
- B) 4 Black Washers
- C) 4 Large Nuts
- D) 8 Long Screws
- E) 8 Small Nuts

Other

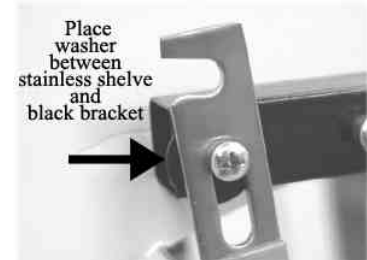
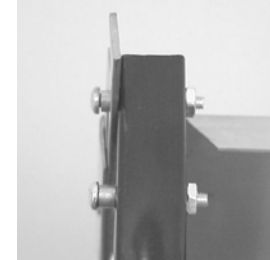
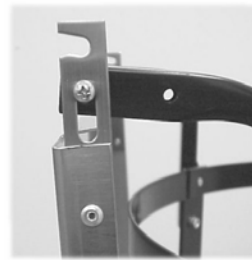
- (8) Copper Ring Spacers
- (4) Black Brackets



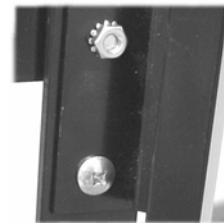
STEP 1 Place the first bracket on the cradle by unscrewing the four nuts located at the metal ring with the 4 legs of the cradle. Note that the top of the brackets will have to point outward to the sides.



STEP 2 Put each metal support bracket on the outside of the leg placing the upper hole of the bracket through the screw while replacing the nut in position. Don't tighten yet and don't place the bottom screw; adjustment may be required.



STEP 3 Place one (D) long screw from the outside of the bracket through the sliding hole of the shelf hinge. The screw must be placed in from the outer part of the bracket. Make sure that you insert the long screw into the copper ring spacer before inserting into shelf hinge. Repeat the same on the other bracket hole. Secure the screws with a nut and black washer (in between shelve and bracket) on the top screw and a nut on the bottom screw.



STEP 4 The last step is to secure the brackets with the large short screw and the nut accompanying it. Tighten securely and you are ready to go. If you have questions, please contact Primo customer service at 770.729.1110.

